

# Introduction highlights

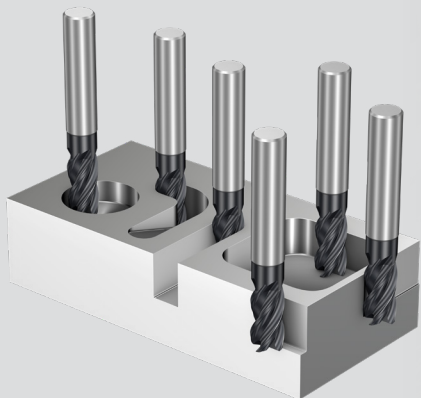
October 2022

## CoroMill® Dura

Efficient and versatile end milling

CoroMill® Dura is a new range of high-performing versatile solid end mills. The concept offers true flexibility in roughing to finishing operations in multiple materials.

The key to success lies in the unique WhisperKut™ technology. Unequal helix angles effectively break up harmful harmonics, making smooth and stable milling easier than ever before.

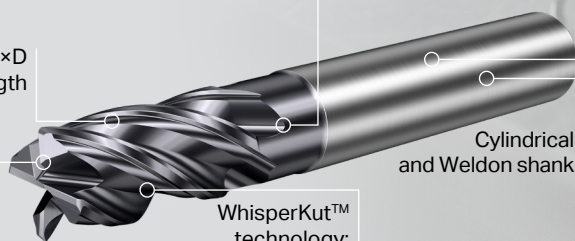


**P** **M** **K** **N** **S**  
ISO application areas



2-7 flutes, 1-4×D cutting length

Face geometry with ramping capability up to 20°



WhisperKut™ technology: silent, smooth and stable milling

Corner radii, neck and chip divider options

Cylindrical and Weldon shank

Reliable and highly wear-resistant grade GC1730

See CoroMill® Dura in action online





ISO application areas

# CoroMill® MF80

Multi-edge face and shoulder milling cutter

Time to level up your face and shoulder milling operations with the new CoroMill® MF80, a reliable tool for most automotive milling applications in ISO K and P materials.

This concept offers a lightweight cutter body with shim protection ensuring secure, vibration-free cutting.

Application:

- Thin-walled components where low axial forces are required
- Components and machine set-ups with limited stability
- Roughing and semi-roughing



Read more about the CoroMill® MF80

# CoroTurn® Prime

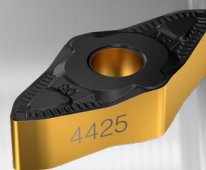
Further boost your productive capacity with second generation B-type inserts

Ultimate cost-efficiency! Double-sided negative inserts with four cutting edges incorporating our latest grade technology.

New, robust tip seat design:

- Prevents tool damage in the event of insert breakage
- Enables shifting feed directions without insert movement

Updated geometries deliver excellent chip control, particularly for duplex stainless steel, ductile steels and sticky materials.



CoroTurn® Prime  
More information



Authorized distributor:

