

# CoroMill® MR80

## Cost-efficient face and profile milling

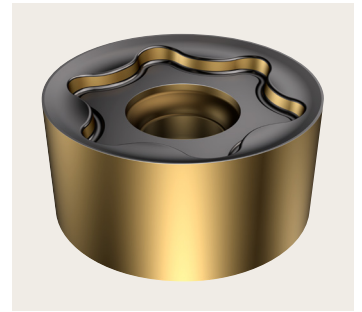


The CoroMill® MR80 is designed for challenging roughing operations in a wide range of face and profile milling applications in steel and stainless steel.

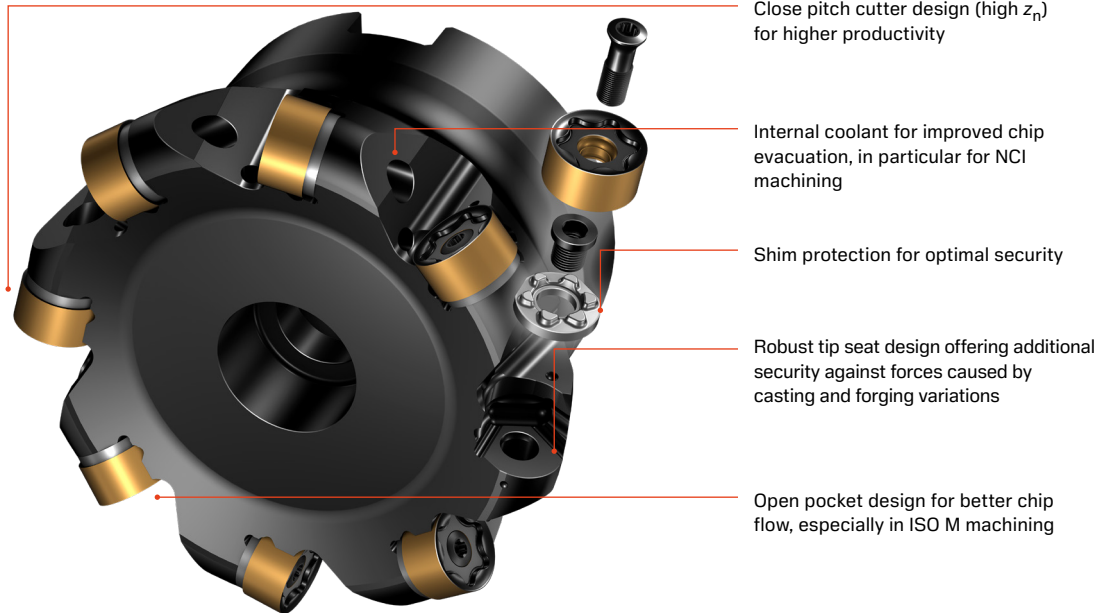
With the security of a round insert cutting edge and our patented shim design, reliable and cost-efficient machining is ensured in any conditions.

# The problem solver

Thanks to the lightweight cutting geometry, less load is exerted on the spindle. As a result, the CoroMill® MR80 is a dependable problem solver, effectively handling long overhangs in tough and vibration-prone operations.



Thanks to the double-sided insert design and a total of 12 indexing possibilities, the CoroMill® MR80 is an economical solution designed primarily for face milling operations.



Close pitch cutter design (high  $z_n$ ) for higher productivity

Internal coolant for improved chip evacuation, in particular for NCI machining

Shim protection for optimal security

Robust tip seat design offering additional security against forces caused by casting and forging variations

Open pocket design for better chip flow, especially in ISO M machining



Mounting pads on the shim ensure correct positioning of the insert in the tip seat.



Correct orientation of the shim in the pocket ensures positional accuracy of the mounted insert.

## Application

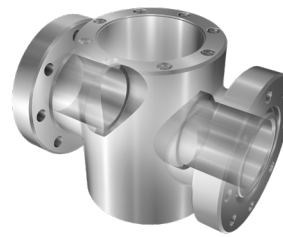
- Rough milling and semi-roughing operations requiring the security of a round insert cutting edge
- Face and shoulder milling with limited pocket milling and ramping capabilities
- Interrupted machining and applications prone to notch wear



Turbocharger



Exhaust manifold



Valve body

Read more about the CoroMill® MR80:  
[sandvik.coromant.com/coromillmr80](http://sandvik.coromant.com/coromillmr80)



ISO application areas

Authorized distributor

Authorized distributor:



[www.dgisupply.com](http://www.dgisupply.com)



1-800-923-6255

