

CoroMill® MR80

Cost-efficient face and profile milling

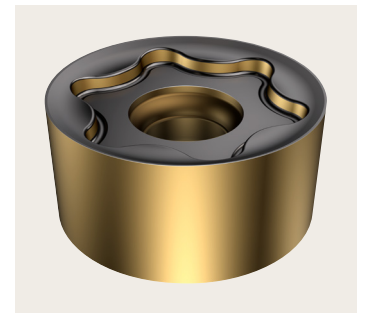
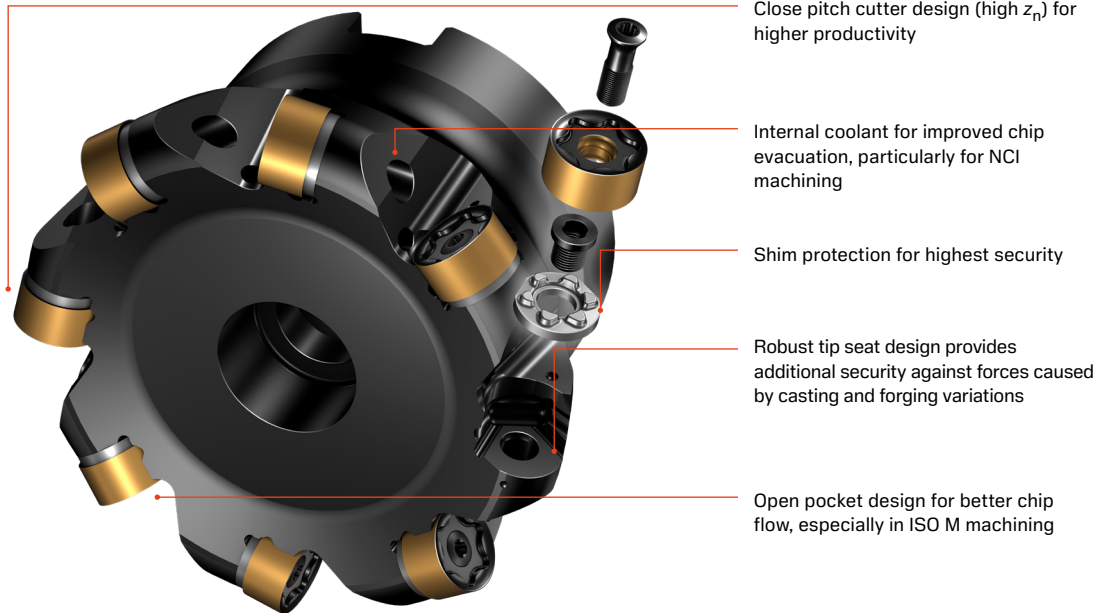


CoroMill® MR80 is designed for challenging roughing operations in a wide range of face and profile milling applications in steel and stainless steel.

With the security of a round insert cutting edge and our patented shim design, reliable and cost-efficient machining is ensured in all situations.

The problem-solver

Thanks to the lightweight cutting geometry, less load is exerted on the spindle. As a result, CoroMill® MR80 is a dependable problem-solver, effectively handling long overhangs in tough and vibration-prone operations.



Thanks to the double-sided insert design and a total of 12 indexing possibilities, CoroMill® MR80 is an economical solution in primarily face milling operations.



Mounting pads on the shim ensure correct positioning of the insert in the tip seat.



Correct orientation of the shim in the pocket ensures positional accuracy of the insert mounted.

Application

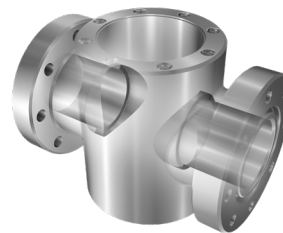
- Rough milling and semi-roughing operations requiring the security of a round insert cutting edge
- Face and shoulder milling with limited pocket milling and ramping capabilities
- Interrupted machining and applications prone to notch wear



Turbo charger



Exhaust manifold



Valve body



ISO application areas

Read more about
CoroMill® MR80:
[sandvik.coromant.com/
coromillmr80](https://sandvik.coromant.com/coromillmr80)



Authorized distributor

